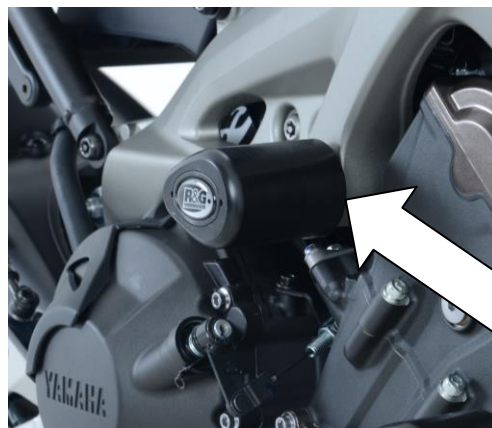




**FITTING INSTRUCTIONS FOR CP0355BL CRASH PROTECTORS**  
**YAMAHA MT 09 2013-**



PICTURE A



PICTURE B



REAR OF BIKE

FRONT OF BIKE

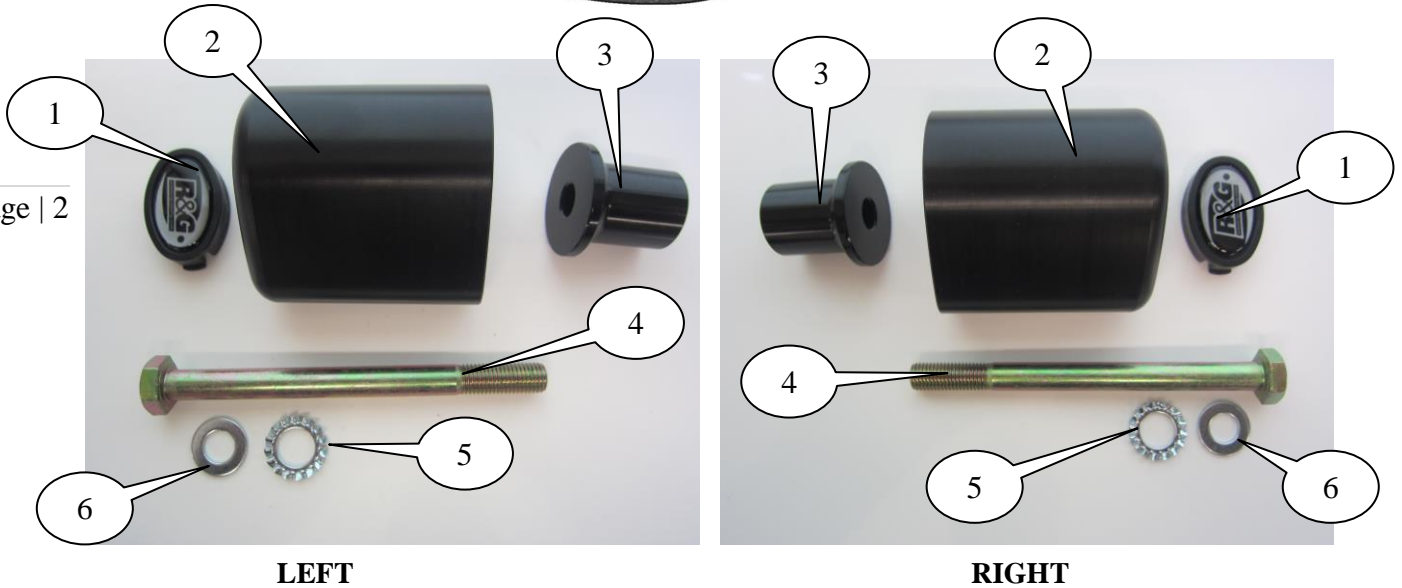
PICTURE C

**THIS KIT CONTAINS THE ITEMS PICTURED AND LABELLED BELOW.**  
**DO NOT PROCEED UNTIL YOU ARE SURE ALL PARTS ARE PRESENT.**

**Please note that the way the kit is packed does not necessarily represent the way of mounting to the bike**

Please note that in cases where kits are packed with rubber washers holding the components onto the bolt – *the rubber washers should be thrown away!*

THE PARTS SHOWN MAY BE REPRESENTATIVE ONLY (FOR CLARITY OF INSTRUCTIONS ONLY)



### **TOOLS REQUIRED**

- Socket set to include 17mm socket and wrench.
- Socket set to include 8mm A/F socket and wrench.
  - Torque wrench (up to 40 Nm).

### **LEGEND**

- ITEM 1 = BC0002 CRASH PROTECTOR CAPS (x2).  
ITEM 2 = B0061 with CS341 (10mm) (CRASH PROTECTORS) (x2).  
ITEM 3 = S0366 SPACERS (x2).  
ITEM 4 = M10x1.25x120mm LONG HEX HEAD BOLT (x2).  
ITEM 5 = M10 PLAIN WASHERS (x2).  
ITEM 6 = LW0001 ( SHAKE PROOF WASHERS) (x2).

### **FITTING INSTRUCTIONS**

#### **Left Side (as you sit on bike)**

- Remove the engine bolt on the left side of the bike, as arrowed in picture A.
- Slide one of the 10mm washers (item 6) onto the M10x120mm long hexagon headed bolt (item 4) so the washer sits against head of bolt.
- Slide serrated locking washer (item 5) over the bolt so it sits against washer just fitted.
- Next slide the bolt with washers through either crash protector (item 2) so head of bolt and washers goes into counter-bore in bobbin.
- Slide one of the spacers (item 3) over the exposed end of the bolt with the larger diameter against the crash protector.
- Offer the crash protector and spacer assembly up to the frame mount and begin to tighten the bolt as shown in picture A.
- Tighten the bolt until you feel some compression from inside the protector using 17mm socket and wrench. **PLEASE NOTE THE CRASH PROTECTOR MUST BE POSITIONED AS**



**IN PICTURE 'C' WITH BIGGER END TOWARD FRONT OF BIKE.** Turn a little more so that you feel the compression increase slightly. Then apply a quarter turn. Do not over tighten as damage can occur to the bike. Do not exceed 40nm of torque.

- If not already fitted fit bubble stickers into recess of both crash protector caps.
- Fit crash protector caps (item 1) into both crash protectors.

### **Right Side (as you sit on bike)**

- Remove the engine bolt on the left side of the bike, as arrowed in picture B.
- Slide one of the 10mm washers (item 6) onto the M10x120mm long hexagon headed bolt (item 4) so the washer sits against head of bolt.
- Slide serrated locking washer (item 5) over the bolt so it sits against washer just fitted.
- Next slide the bolt with washers through either crash protector (item 2) so head of bolt and washers goes into counter-bore in bobbin.
- Slide one of the spacers (item 3) over the exposed end of the bolt with the larger diameter against the crash protector.
- Offer the crash protector and spacer assembly up to the frame mount and begin to tighten the bolt as shown in picture B.
- Tighten the bolt until you feel some compression from inside the protector using 17mm socket and wrench. **PLEASE NOTE THE CRASH PROTECTOR MUST BE POSITIONED AS IN PICTURE 'C' WITH BIGGER END TOWARD FRONT OF BIKE.** Turn a little more so that you feel the compression increase slightly. Then apply a quarter turn. Do not over tighten as damage can occur to the bike. Do not exceed 40nm of torque.
- If not already fitted fit bubble stickers into recess of both crash protector caps.
- Fit crash protector caps (item 1) into both crash protectors.

Issue 1 18/10/2013 (NSY)

### **CONSUMER NOTICE**

The catalogue description and any exhibition of samples are only broad indications of the Products and R&G may make design changes which do not diminish their performance or visual appeal and supplying them in such state shall conform to the order. The Buyer acknowledges no representation or warranty (other than as to title) has been given or will apply to the Products other than those in R&G's order or confirmation and the Buyer confirms it has chosen the Products as being of merchantable quality and suitable for its particular purposes. Where R&G fits the Products or undertakes other services it shall exercise reasonable skill and care and rectify any fault free of charge unless the workmanship has been disturbed. The Buyer is responsible for ensuring that the warranty on the motorcycle is not affected by the fitting of the Products. On return of any defective Products R&G shall at its option either supply a replacement or refund the purchase money but shall not be liable if the Products have been modified or used or maintained otherwise than in accordance with R&G's or manufacturer's instructions and good engineering practice or if the defect arises from accident or neglect. Other than identified above and subject to R&G not limiting its liability for causing death and personal injury, it shall not be liable for indirect or consequential loss and otherwise its liability shall be limited to the amounts paid by the Buyer for the Products or the fitting or service concerned. These terms do not affect the Buyer's statutory rights.

### **R&G RACING RETURNS POLICY (NON-FAULTY GOODS)**

Returns must be pre-authorized (if not pre-authorized the return will be rejected). Goods may only be returned direct to us if they were purchased direct from us (customer must prove if necessary). Otherwise to be returned to original vendor. Goods must be in re-sellable condition, in the opinion of R&G Racing. All returns are subject to a 25% restocking and handling fee (25% of the gross value exc. P&P – at the prevailing price at time of purchase). The customer must pay any and all carriage charges. No returns of discontinued products, unless within 14 days of purchase. This policy does not affect your statutory rights and does not refer to faulty goods.

R&G Racing

Unit 1, Shelley's Lane, East Worldham, Alton, Hampshire, GU34 3AQ

Tel: +44 (0)1420 89007 Fax: +44 (0)1420 87301 [www.rg-racing.com](http://www.rg-racing.com) Email: [info@rg-racing.com](mailto:info@rg-racing.com)



**INSTRUCTIONS DE MONTAGE POUR CP0355BL PROTECTIONS CRASH**  
**YAMAHA MT 09 2013-**

Page | 4



PHOTO A

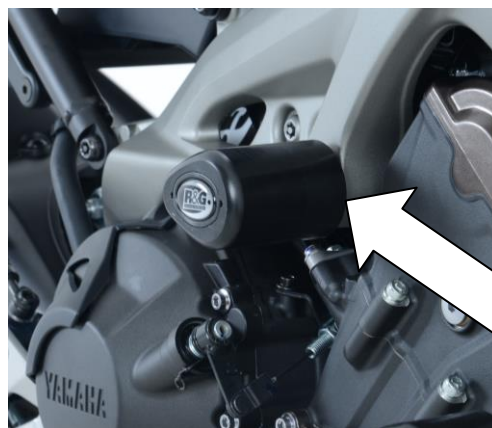
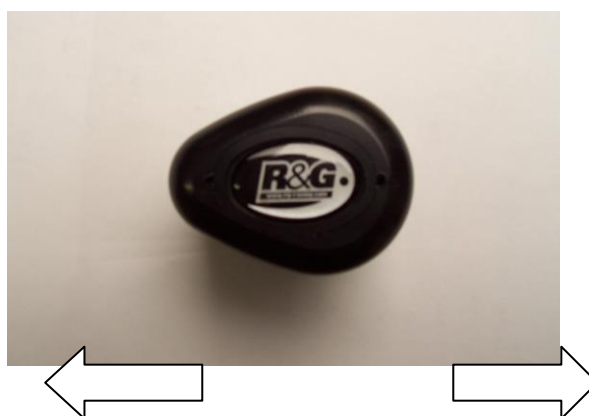


PHOTO B



**ARRIÈRE MOTO**

**AVANT MOTO**

PHOTO C

**LE KIT CONTIENT LES ARTICLES EXPOSES CI-DESSOUS, VERIFIER QUE TOUTES LES PIECES SOIENT PRESENTES AVANT DE PROCEDER AU MONTAGE.**

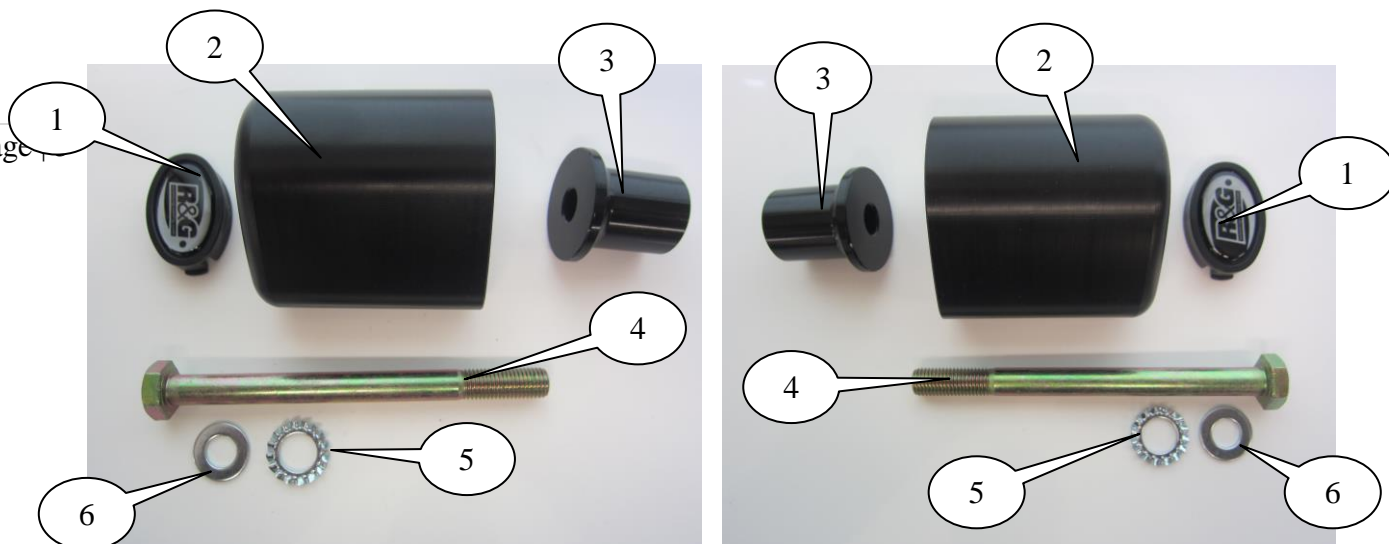
LA FAÇON DONT LE KIT EST EMBALLE NE CORRESPOND PAS FORCEMENT A LA FAÇON DE MONTER LES PIECES SUR LA MOTO.

Notez que si les kits sont emballés avec des rondelles en caoutchouc servant à tenir les composants, *ces rondelles doivent être jetées.*

LES PARTIES PRESENTEES PEUVENT ETRE UNIQUEMENT REPRESENTATIVES (POUR LA CLARTE DES INSTRUCTIONS UNIQUEMENT).



Page 1



GAUCHE

DROITE

#### TOOLS REQUIRED

- Jeu de clés 17mm.
- Jeu de clés 8mm.
- Clé dynamométrique (à 40 Nm).

#### LEGENDE

ARTICLE 1 = BC0002 CAPUCHONS DE PROTECTION CRASH (x2).  
ARTICLE 2 = B0061 avec CS341 (10mm) (PROTECTIONS CRASH) (x2).  
ARTICLE 3 = S0366 ENTRETOISES (x2).  
ARTICLE 4 = M10x1.25x120mm BOULONS (x2).  
ARTICLE 5 = M10 RONDELLES (x2).  
ARTICLE 6 = LW0001 (RONDELLES ANTI VIBRATION ) (x2).

#### INSTRUCTIONS DE MONTAGE :

##### Coté gauche (assis sur la moto) :

- Enlever le boulon moteur coté gauche de la moto (Photo A).
- Glisser une des rondelles 10mm (Article 6) sur le boulon M10x120mm (Article 4) de façon à ce que la rondelle se place contre la tête du boulon.
- Glisser une rondelle de blocage (Article 5) sur le boulon de façon à ce qu'elle se place contre la rondelle qui vient d'être placée.
- Glisser ensuite le boulon avec rondelles à travers la protection crash (Article 2) de façon à ce que la tête du boulon et les rondelles se placent dans le contre alésage de la bobine de protection.
- Glisser une des entretoises (Article 3) autour de l'extrémité du boulon avec le diamètre le plus large contre le protection crash.

R&G Racing

Unit 1, Shelley's Lane, East Worldham, Alton, Hampshire, GU34 3AQ

Tel: +44 (0)1420 89007 Fax: +44 (0)1420 87301 [www.rg-racing.com](http://www.rg-racing.com) Email: [info@rg-racing.com](mailto:info@rg-racing.com)



- Monter l'ensemble de protection sur le cadre et commencer à serrer le boulon (Photo A).
- Serrez les boulons jusqu'à ce que vous sentiez une légère compression de l'intérieur de la protection, à l'aide d'une clé de 17 mm. **LA PROTECTION DOIT ETRE POSITIONNEE COMME EN "C" AVEC LE COTE ARRONDI LE PLUS GROS EN DIRECTION DE L'AVANT DE LA MOTO. Tourner un peu plus afin d'accentuer légèrement la compression. Faire un quart de tour. Pas plus de 40 Nm de couple - Ne pas trop serrer, au risque d'abîmer les composants.**
- Mettre le sticker de caoutchouc dans le creux de capuchon de la protection.
- Mettre les 2 capuchons (Article 1) sur les protections.

**Coté droit (assis sur la moto) :**

- Enlever le boulon moteur coté gauche de la moto (Photo B).
- Glisser une des rondelles 10mm (Article 6) sur le boulon M10x120mm (Article 4) de façon à ce que la rondelle se place contre la tête du boulon.
- Glisser une rondelle de blocage (Article 5) sur le boulon de façon à ce qu'elle se place contre la rondelle qui vient d'être placée.
- Glisser ensuite le boulon avec rondelles à travers la protection crash (Article 2) de façon à ce que la tête du boulon et les rondelles se placent dans le contre alésage de la bobine de protection.
- Glisser une des entretoises (Article 3) autour de l'extrémité du boulon avec le diamètre le plus large contre la protection crash.
- Monter l'ensemble de protection sur le cadre et commencer à serrer le boulon (Photo B).
- Serrez les boulons jusqu'à ce que vous sentiez une légère compression de l'intérieur de la protection, à l'aide d'une clé de 17 mm. **LA PROTECTION DOIT ETRE POSITIONNEE COMME EN "C" AVEC LE COTE ARRONDI LE PLUS GROS EN DIRECTION DE L'AVANT DE LA MOTO. Tourner un peu plus afin d'accentuer légèrement la compression. Faire un quart de tour. Pas plus de 40 Nm de couple - Ne pas trop serrer, au risque d'abîmer les composants.**
- Mettre le sticker de caoutchouc dans le creux de capuchon de la protection.
- Mettre les 2 capuchons (Article 1) sur les protections.

Issue 1 18/10/2013 (NSY)