



FITTING INSTRUCTIONS FOR CP0448 CRASH PROTECTORS
HONDA CB300R 2018



THIS KIT CONTAINS THE ITEMS PICTURED AND LABELLED BELOW.
DO NOT PROCEED UNTIL YOU ARE SURE ALL PARTS ARE PRESENT.

Please note that the way the kit is packed does not necessarily represent the way of mounting to the
 bike

THE PARTS SHOWN MAY BE REPRESENTATIVE ONLY (FOR CLARITY OF INSTRUCTIONS ONLY)

Digital copies of these instructions are available to download from www.rg-racing.com

LEGEND

1. 1 x EB046 M10x385MM ENGINE BAR
2. 2 x S1134 SPACER
3. 2 x B0431 10MM CRASH BOBBINS (L&R SIDES)
4. 2 x LW0001 SHAKE PROOF WASHERS
5. 2 x M10 WASHERS 19mm O/D STAINLESS
6. 2 x M10x1.25 NYLOC NUTS STAINLESS
7. 2 x BC0002BK BOBBIN CAPS
8. 4 x RGS0005 BUBBLE STICKER
9. 1 x FITTING INSTRUCTIONS

Please note that in cases where kits are packed with rubber washers holding the components onto the bolt – *the rubber washers should be thrown away!*

TOOLS REQUIRED

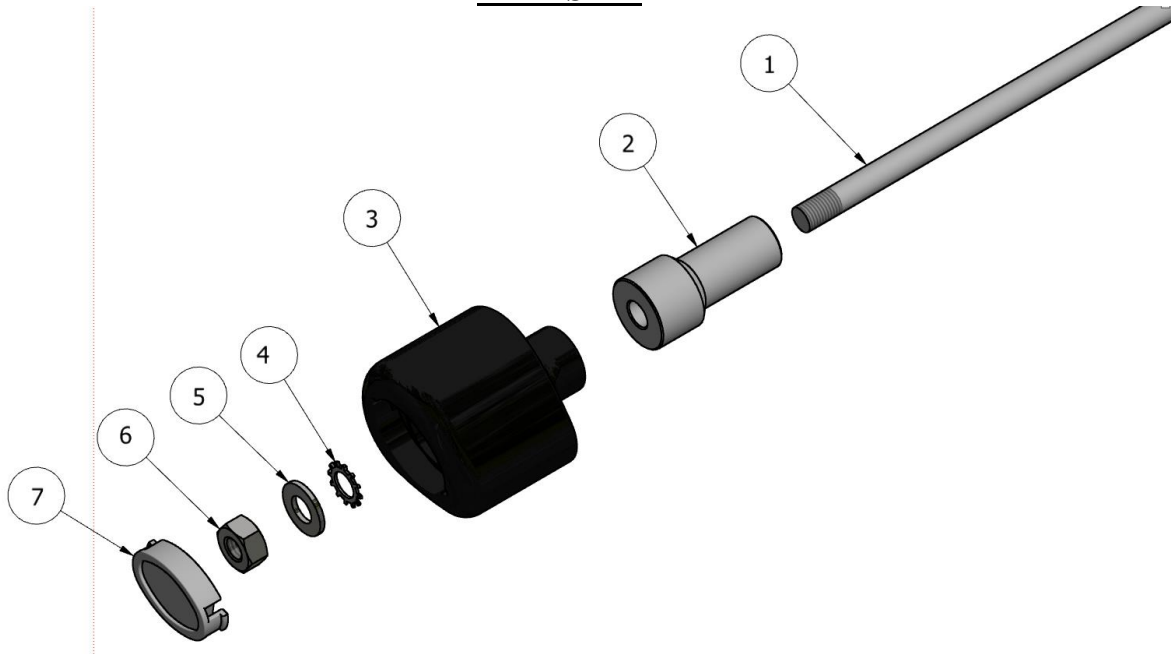
- A socket set to include 14/17mm A/F and wrench.
 - Torque wrench (up to 40Nm)
 - Soft Faced Mallet.

R&G

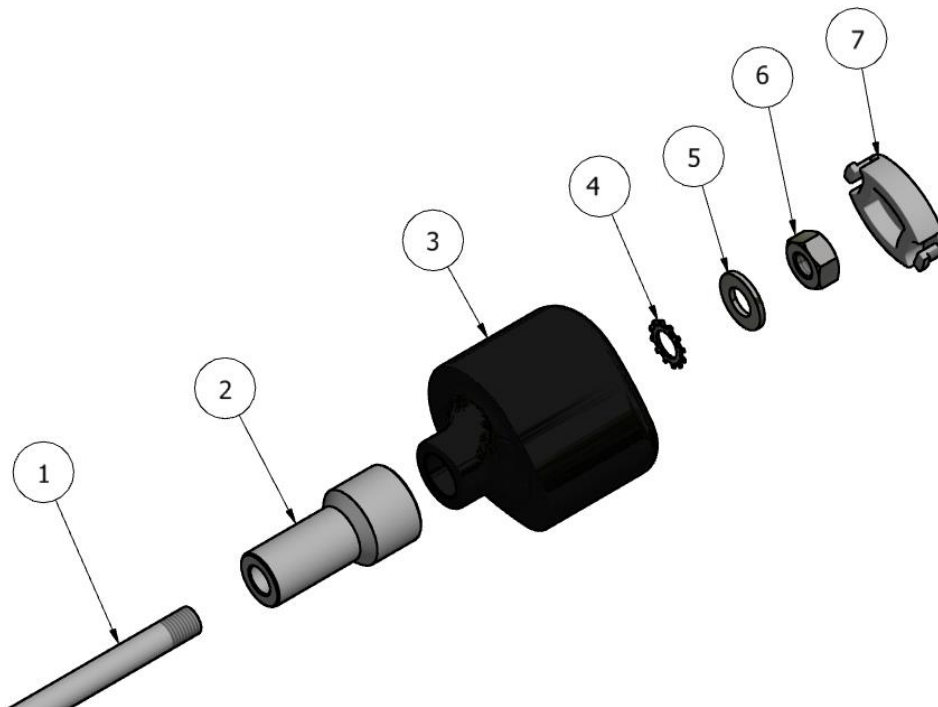
Unit 1, Shelley's Lane, East Worldham, Alton, Hampshire, GU34 3AQ
 Tel: +44 (0)1420 89007 Fax: +44 (0)1420 87301 www.rg-racing.com Email: info@rg-racing.com



LEFT SIDE



RIGHT SIDE



R&G



IMAGE 1



IMAGE 2



IMAGE 3



IMAGE 4



IMAGE 5



IMAGE 6

R&G



INSTRUCTIONS

- It is a good idea to support the engine from underneath to prevent any chance of movement within the frame during fitting.
- Undo the nut on the engine bolt located mid-engine on the right-hand side of the motorcycle, as arrowed in image 1.
- Take the R&G engine bar (part 1), with a soft hammer, use it to knock through the OEM engine bolt leaving equal amounts protruding on each side of the frame as in image 2.
- Slide the spacers (part 2) onto each end of bar and ensure that the larger diameter of the spacers are facing outwards as shown in image 3.
- Slide the crash protectors (part 3) onto either end of the bar, followed by a lock washer (part 4) and an M10 washer (part 5). Then fit both Nyloc Nuts (part 6) on the end of the bar as shown in image 4.
- **PLEASE NOTE BOBBIN MUST BE POSITIONED AS SEEN IN THE PICTURE BELOW WITH BIGGER END TOWARD FRONT OF BIKE.**



- Tighten the nuts until you feel some compression from inside the protector. Turn a little more so that you feel the compression increase slightly. Tighten to 40Nm of torque (do not exceed this figure, as damage can occur to the motorcycle and the bolt). At this point visually check that the engine bar protrudes past the nyloc nut by at least 1 and a half threads on both sides as shown in image 5.
- When the protectors are tight fit the caps (part 6) into the protector as shown in image 6.
- If not already fitted fit bubble sticker (part 7) into recess of bobbin cap.

DUE TO THE RISK OF CROSS-THREADING OF BOLTS ETC; WE ALWAYS RECOMMEND THAT OUR PRODUCTS BE FITTED BY ONE OF OUR OFFICIAL DEALERS OR A QUALIFIED MECHANIC.

Issue 1 11/09/2018 (DM)



CONSUMER NOTICE

The catalogue description and any exhibition of samples are only broad indications of the Products and R&G may make design changes which do not diminish their performance or visual appeal and supplying them in such state shall conform to the order. The Buyer acknowledges no representation or warranty (other than as to title) has been given or will apply to the Products other than those in R&G's order or confirmation and the Buyer confirms it has chosen the Products as being of merchantable quality and suitable for its particular purposes. Where R&G fits the Products or undertakes other services it shall exercise reasonable skill and care and rectify any fault free of charge unless the workmanship has been disturbed. The Buyer is responsible for ensuring that the warranty on the motorcycle is not affected by the fitting of the Products. On return of any defective Products R&G shall at its option either supply a replacement or refund the purchase money but shall not be liable if the Products have been modified or used or maintained otherwise than in accordance with R&G's or manufacturer's instructions and good engineering practice or if the defect arises from accident or neglect. Other than identified above and subject to R&G not limiting its liability for causing death and personal injury, it shall not be liable for indirect or consequential loss and otherwise its liability shall be limited to the amounts paid by the Buyer for the Products or the fitting or service concerned. These terms do not affect the Buyer's statutory rights.

R&G RETURNS POLICY (NON-FAULTY GOODS)

Returns must be pre-authorized (if not pre-authorized the return will be rejected). Goods may only be returned direct to us if they were purchased direct from us (customer must prove if necessary). Otherwise to be returned to original vendor. Goods must be in re-sellable condition, in the opinion of R&G. All returns are subject to a 25% restocking and handling fee (25% of the gross value exc. P&P – at the prevailing price at time of purchase). The customer must pay any and all carriage charges. No returns of discontinued products, unless within 14 days of purchase. This policy does not affect your statutory rights and does not refer to faulty goods.

R&G

Unit 1, Shelley's Lane, East Worldham, Alton, Hampshire, GU34 3AQ
Tel: +44 (0)1420 89007 Fax: +44 (0)1420 87301 www.rg-racing.com Email: info@rg-racing.com



NOTICE DE MONTAGE CP0448 PROTECTIONS CRASH
HONDA CB300R 2018



Le kit contient les articles exposés ci-dessous, vérifier que toutes les pièces soient présentes avant de procéder au montage.

La façon dont le kit est emballé ne correspond pas forcément à la façon de monter les pièces sur la moto.

LES PARTIES PRESENTEES PEUVENT ETRE UNIQUEMENT REPRESENTATIVES (POUR LA CLARTE DES INSTRUCTIONS UNIQUEMENT)

Notice disponible au téléchargement sur www.rg-racing.com

LÉGENDE

- 10. 1 x EB046 M10x385MM AXE MOTEUR
- 11. 2 x S1134 ENTRETOISE
- 12. 2 x B0431 10MM BOBINES (CÔTÉS GAUCHE ET DROIT)
- 13. 2 x LW0001 RONDELLES ANTI VIBRATION
- 14. 2 x M10 RONDELLES 19mm O/D INOXYDABLE
- 15. 2 x M10x1.25 ÉCROUS INOXYDABLES
- 16. 2 x BC0002BK CAPUCHONS DE BOBINES
- 17. 4 x RGS0005 STICKER EN CAOUTCHOUC
- 18. 1 x NOTICE DE MONTAGE

Notez que si les kits sont emballés avec des rondelles en caoutchouc servant à tenir les composants, *ces rondelles doivent être jetées !*

OUTILS REQUIS

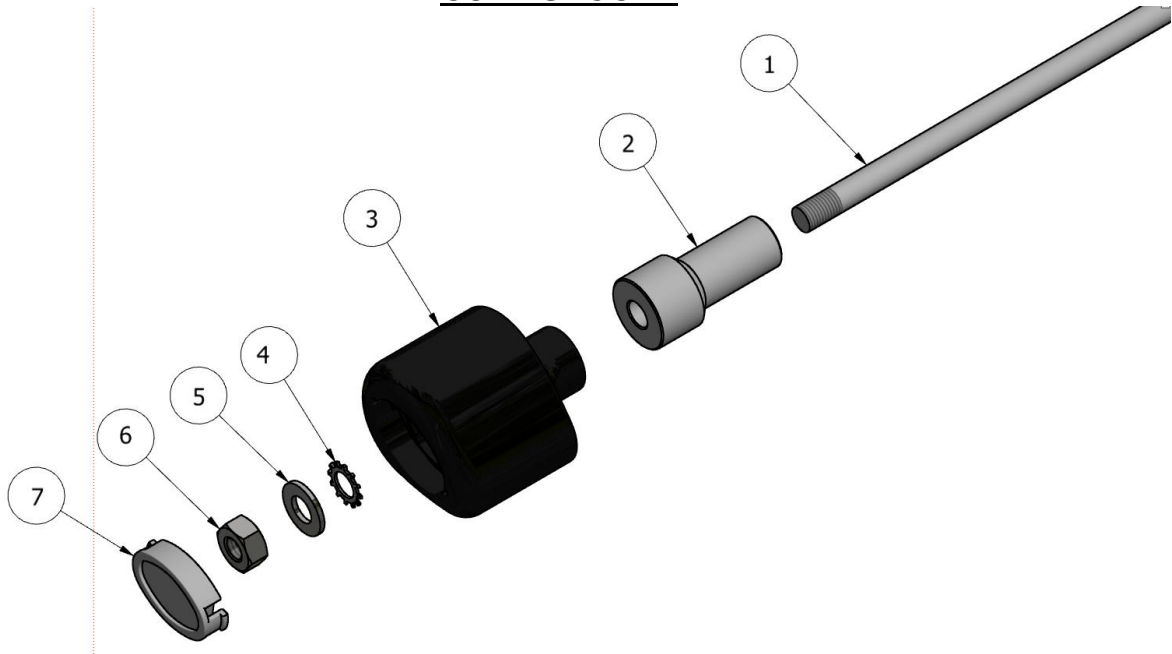
- Jeu de clés à cliquet + douilles 14 et 17mm.
 - Clé dynamométrique (à 40 Nm)
 - Maillet.

R&G

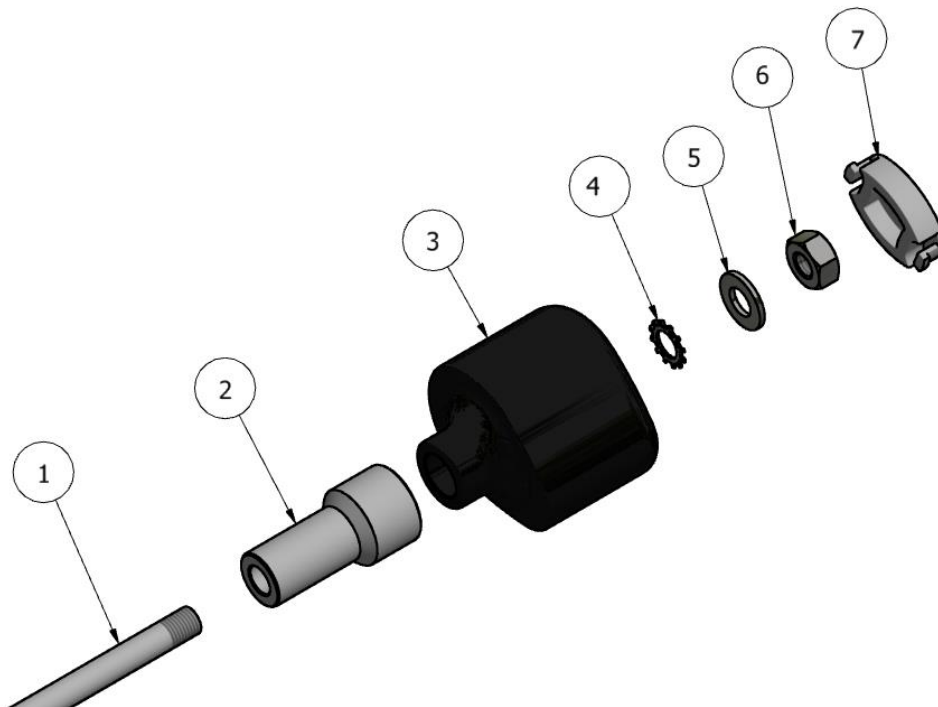
Unit 1, Shelley's Lane, East Worldham, Alton, Hampshire, GU34 3AQ
 Tel: +44 (0)1420 89007 Fax: +44 (0)1420 87301 www.rg-racing.com Email: info@rg-racing.com



CÔTÉ GAUCHE



CÔTÉ DROIT



R&G



IMAGE 1



IMAGE 2



IMAGE 3



IMAGE 4



IMAGE 5



IMAGE 6

R&G



NOTICE DE MONTAGE

- Il est judicieux de supporter le moteur par dessous pour éviter toute possibilité de mouvement du cadre durant le montage.
- Enlever l'écrou sur le boulon moteur placé à mi-moteur du côté droit de la moto, voir image 1.
- Prendre l'axe moteur R&G (partie 1), avec un petit maillet, que vous utiliserez pour tapoter sur le boulon d'axe moteur en laissant dépasser des longueurs égales de chaque côté du cadre, comme sur l'image 2.
- Glisser les entretoises (partie 2) sur chaque extrémité de l'axe et veiller à ce que le diamètre plus large des entretoises soient orientées vers l'extérieur, voir image 3.
- Glisser les protections crash (partie 3) sur chaque extrémité de l'axe, suivies d'une rondelle de blocage (partie 4) et une rondelle M10 (partie 5). Puis, insérez les écrous (partie 6) sur l'extrémité de chaque axe, voir image 4.
- **LA PROTECTION DOIT ETRE POSITIONNEE COMME EN "C" AVEC LE CÔTÉ ARRONDI LE PLUS GROS EN DIRECTION DE L'AVANT DE LA MOTO.**

ARRIÈRE MOTO



AVANT MOTO

PHOTO C

- Serrer jusqu'à ce que vous sentiez une compression à l'intérieur de la protection. Tourner un peu plus afin d'accentuer légèrement la compression. Serrer à 40Nm de couple (Ne pas excéder cette valeur, car cela pourrait endommager la moto et le boulon). A ce stade, vérifiez visuellement que l'axe moteur dépasse de l'écrou d'au minimum 1 filetage et demi des 2 côtés, voir image 5.
- Lorsque les protections sont installées, insérez les capuchons (partie 6) dans la protection, voir image 6.
- Si cela n'est pas déjà fait, insérez les capuchons (partie 7) dans le creux des bouchons de bobine.

DU FAIT DES RISQUES POTENTIELS D'ENDOMMAGEMENT DE CERTAINES PIÈCES, NOUS RECOMMANDONS TOUJOURS QUE LE MONTAGE SOIT EFFECTUÉ PAR UN DE NOS REVENEURS OFFICIELS OU UN MECANICIEN QUALIFIÉ.

Issue 1 11/09/2018 (DM)

R&G

Unit 1, Shelley's Lane, East Worldham, Alton, Hampshire, GU34 3AQ
 Tel: +44 (0)1420 89007 Fax: +44 (0)1420 87301 www.rg-racing.com Email: info@rg-racing.com



CONSUMER NOTICE

The catalogue description and any exhibition of samples are only broad indications of the Products and R&G may make design changes which do not diminish their performance or visual appeal and supplying them in such state shall conform to the order. The Buyer acknowledges no representation or warranty (other than as to title) has been given or will apply to the Products other than those in R&G's order or confirmation and the Buyer confirms it has chosen the Products as being of merchantable quality and suitable for its particular purposes. Where R&G fits the Products or undertakes other services it shall exercise reasonable skill and care and rectify any fault free of charge unless the workmanship has been disturbed. The Buyer is responsible for ensuring that the warranty on the motorcycle is not affected by the fitting of the Products. On return of any defective Products R&G shall at its option either supply a replacement or refund the purchase money but shall not be liable if the Products have been modified or used or maintained otherwise than in accordance with R&G's or manufacturer's instructions and good engineering practice or if the defect arises from accident or neglect. Other than identified above and subject to R&G not limiting its liability for causing death and personal injury, it shall not be liable for indirect or consequential loss and otherwise its liability shall be limited to the amounts paid by the Buyer for the Products or the fitting or service concerned. These terms do not affect the Buyer's statutory rights.

R&G RETURNS POLICY (NON-FAULTY GOODS)

Returns must be pre-authorized (if not pre-authorized the return will be rejected). Goods may only be returned direct to us if they were purchased direct from us (customer must prove if necessary). Otherwise to be returned to original vendor. Goods must be in re-sellable condition, in the opinion of R&G. All returns are subject to a 25% restocking and handling fee (25% of the gross value exc. P&P – at the prevailing price at time of purchase). The customer must pay any and all carriage charges. No returns of discontinued products, unless within 14 days of purchase. This policy does not affect your statutory rights and does not refer to faulty goods.

R&G

Unit 1, Shelley's Lane, East Worldham, Alton, Hampshire, GU34 3AQ
Tel: +44 (0)1420 89007 Fax: +44 (0)1420 87301 www.rg-racing.com Email: info@rg-racing.com



MONTAGEANLEITUNG FÜR CP0448 STURZPADS
HONDA CB300R 2018



ALLE KIT-TEILE SIND UNTEN ABGEBILDET UND GEKENNZEICHNET. BEVOR SIE MIT DER MONTAGE BEGINNEN, ÜBERPRÜFEN SIE, DASS ALLE TEILE VORHANDEN SIND.

Hinweis: Die Verpackung der Teile stellt nicht die Reihenfolge der Montage dar.

DIE UNTEN ABGEBILDETEN TEILE DIENEN LEDIGLICH ZUR ERKLÄRUNG

Eine digitale Version dieser Montageanleitung kann auf folgender Seite heruntergeladen werden: www.rg-racing.com

LIEFERUMFANG

- 19. 1 x EB046 M10x385MM VERBINDUNGSSTANGE
- 20. 2 x S1134 DISTANZHALTER
- 21. 2 x B0431 10MM STURZPADS (LINKE & RECHTE SEITE)
- 22. 2 x LW0001 ZAHNSCHEIBE
- 23. 2 x M10 UNTERLEGSCHIEBE 19mm O/D
- 24. 2 x M10x1,25 SELBSTSICHERNDE MUTTER
- 25. 2 x BC0002BK STURZPAD-KAPPEN
- 26. 4 x RGS0005 BUBBLE-AUFKLEBER
- 27. 1 x MONTAGEANLEITUNG

Hinweis für Kits mit Plastikunterlegscheiben an den Schrauben – *Diese Plastikunterlegscheiben werden nicht für den Einbau benötigt!*

SIE BENÖTIGEN FOLGENDES WERKZEUG

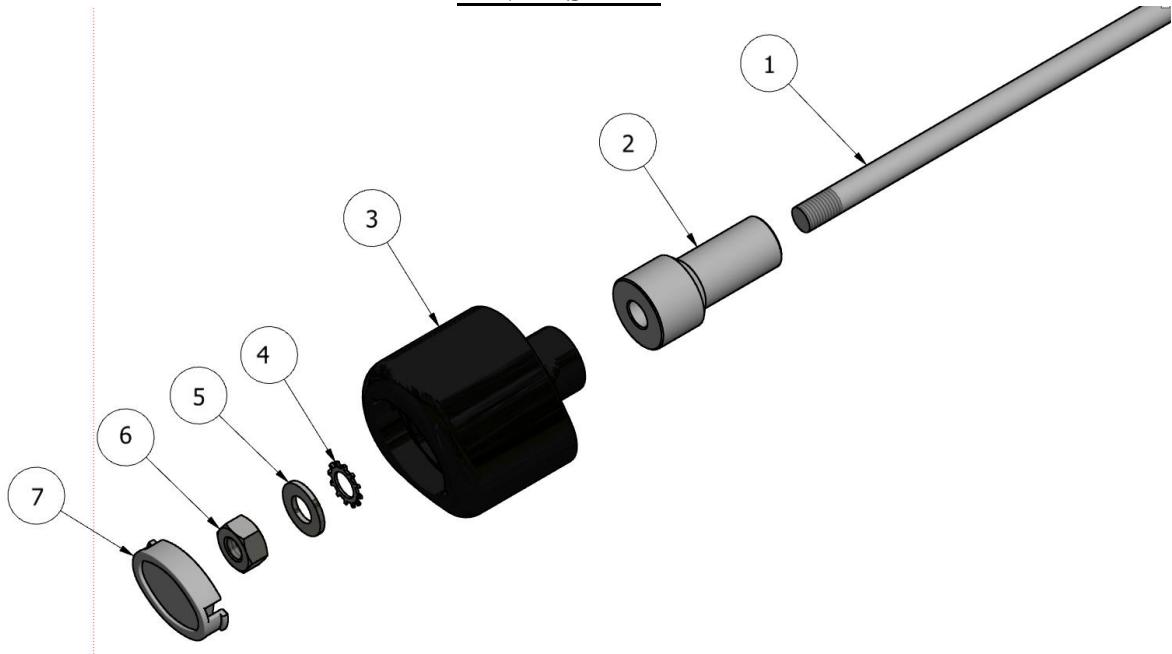
- Steckschlüsselsatz inkl. 14 & 17mm Steckschlüssel
 - Drehmomentschlüssel (bis 40Nm)
 - Schonhammer

R&G

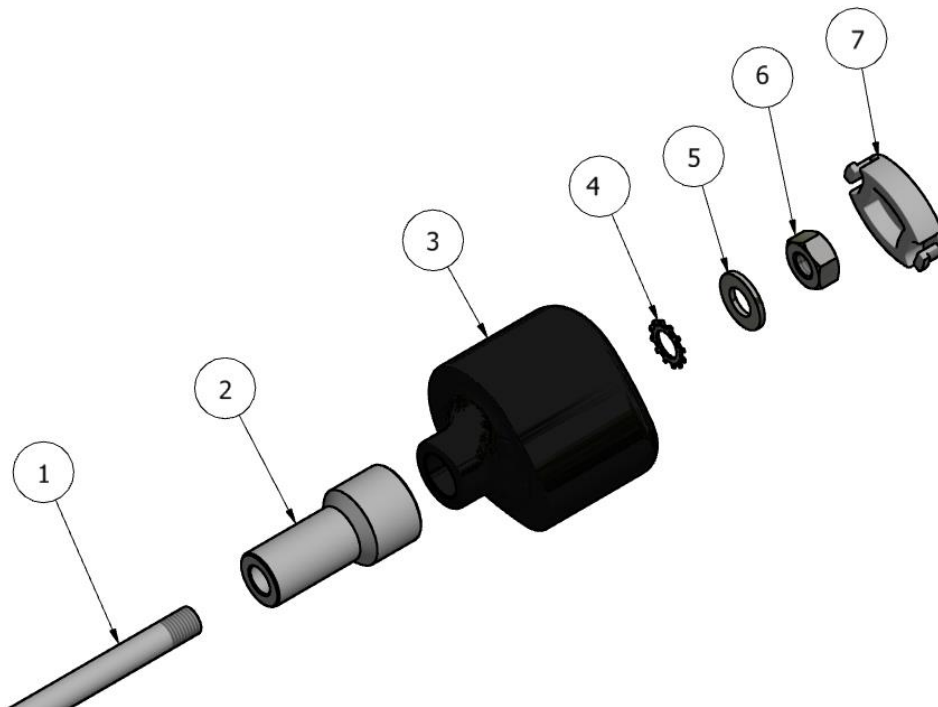
Unit 1, Shelley's Lane, East Worldham, Alton, Hampshire, GU34 3AQ
 Tel: +44 (0)1420 89007 Fax: +44 (0)1420 87301 www.rg-racing.com Email: info@rg-racing.com



LINKE SEITE



RECHTE SEITE



R&G



ABBILDUNG 1



ABBILDUNG 2



ABBILDUNG 3



ABBILDUNG 4



ABBILDUNG 5



ABBILDUNG 6

R&G



MONTAGEANLEITUNG

- Es empfiehlt sich, den Motor von unten zu stützen - somit wird verhindert, dass der Motor sich während der Montage bewegen kann.
- Lösen Sie die Mutter an der Motorschraube, die Mittig am Motor an der rechten Seite des Motorrades positioniert ist – siehe Abbildung 1.
- Nehmen Sie die R&G Verbindungsstange (Artikel 1) und mit Hilfe eines Schonhammers, die original Verbindungsstange/Motorschraube durchzuschieben, so dass die Stange an beiden Seiten des Rahmens gleichmäßig hervorsteht –siehe Abbildung 2.
- Die Distanzhalter (Artikel 2) an beiden Seiten der Verbindungsstange anbringen – bitte darauf achten, dass das große Durchmesser des jeweiligen Distanzhalters nach außen gerichtet ist – siehe Abbildung 3
- Die Sturzpads (Artikel 3) gefolgt von einer Zahnscheibe (Artikel 4) und einer M10 Unterlegscheibe (Artikel 5) an beiden Enden der Verbindungsstange anbringen. Danach jeweils eine selbstsichernde Mutter (Artikel 6) an beiden Enden der Verbindungsstange anbringen.
- **BITTE DARAUFGAHTEN, DASS DAS STURZPAD POSITIONIERT IST WIE UNTEN ABGEBILDET– DAS GRÖßERE ENDE DES STURZPADS ZUM VORDERTEIL DES MOTORRADS GERICHTET**



- Ziehen Sie die Muttern fest, bis Sie etwas Druck vom Inneren des Sturzpads spüren. Noch etwas drehen, bis Sie merken, dass der Druck sich leicht erhöht, dann noch eine Vierteldrehung anwenden. Mit 40 Nm Anzugsmoment anziehen (Nicht überdrehen – dies kann zu einer Beschädigung des Motorrades führen. 40 Nm Anzugsmoment nicht überschreiten!). Zum jetzigen Zeitpunkt an beiden Seiten optisch kontrollieren, dass die Verbindungsstange mit mindestens anderthalb Gewinden an der selbstsichernden Mutter hervorsteht – siehe Abbildung 5.
- Wenn die Sturzpads fest angezogen sind, montieren Sie die Schutzkappen (Artikel) am Sturzpad wie in Abbildung 6 abgebildet.
- Wenn noch nicht bereits montiert, montieren Sie einen Bubble-Aufkleber in der Vertiefung der Sturzpad-Schutzkappe (Artikel 7).

UM EIN EVENTUELLES ÜBERDREHEN ODER VERKANTEN DER SCHRAUBEN ZU VERMEIDEN, EMPFEHLEN WIR IMMER, UNSERE KITS VON EINEM UNSERER OFFIZIELLEN HÄNDLER ODER EINEM QUALIFIZIERTEN ZWEIRADMECHANIKER MONTIEREN ZU LASSEN.

Ausgabe 1 11/09/2018 (DM)

R&G

Unit 1, Shelley's Lane, East Worldham, Alton, Hampshire, GU34 3AQ
Tel: +44 (0)1420 89007 Fax: +44 (0)1420 87301 www.rg-racing.com Email: info@rg-racing.com

**CONSUMER NOTICE**

The catalogue description and any exhibition of samples are only broad indications of the Products and R&G may make design changes which do not diminish their performance or visual appeal and supplying them in such state shall conform to the order. The Buyer acknowledges no representation or warranty (other than as to title) has been given or will apply to the Products other than those in R&G's order or confirmation and the Buyer confirms it has chosen the Products as being of merchantable quality and suitable for its particular purposes. Where R&G fits the Products or undertakes other services it shall exercise reasonable skill and care and rectify any fault free of charge unless the workmanship has been disturbed. The Buyer is responsible for ensuring that the warranty on the motorcycle is not affected by the fitting of the Products. On return of any defective Products R&G shall at its option either supply a replacement or refund the purchase money but shall not be liable if the Products have been modified or used or maintained otherwise than in accordance with R&G's or manufacturer's instructions and good engineering practice or if the defect arises from accident or neglect. Other than identified above and subject to R&G not limiting its liability for causing death and personal injury, it shall not be liable for indirect or consequential loss and otherwise its liability shall be limited to the amounts paid by the Buyer for the Products or the fitting or service concerned. These terms do not affect the Buyer's statutory rights.

R&G RETURNS POLICY (NON-FAULTY GOODS)

Returns must be pre-authorized (if not pre-authorized the return will be rejected). Goods may only be returned direct to us if they were purchased direct from us (customer must prove if necessary). Otherwise to be returned to original vendor. Goods must be in re-sellable condition, in the opinion of R&G. All returns are subject to a 25% restocking and handling fee (25% of the gross value exc. P&P – at the prevailing price at time of purchase). The customer must pay any and all carriage charges. No returns of discontinued products, unless within 14 days of purchase. This policy does not affect your statutory rights and does not refer to faulty goods.

R&G

Unit 1, Shelley's Lane, East Worldham, Alton, Hampshire, GU34 3AQ
Tel: +44 (0)1420 89007 Fax: +44 (0)1420 87301 www.rg-racing.com Email: info@rg-racing.com